



IAW-42

Clearance Check List

Important questions to consider prior to the purchase of an IAW-42

- Do you have 43 1/3" in front of the unit for the board to drop down completely?**

Ensure that you have a full 43 1/3" in front of the desired installation location for the board to drop down fully when surface mounting.

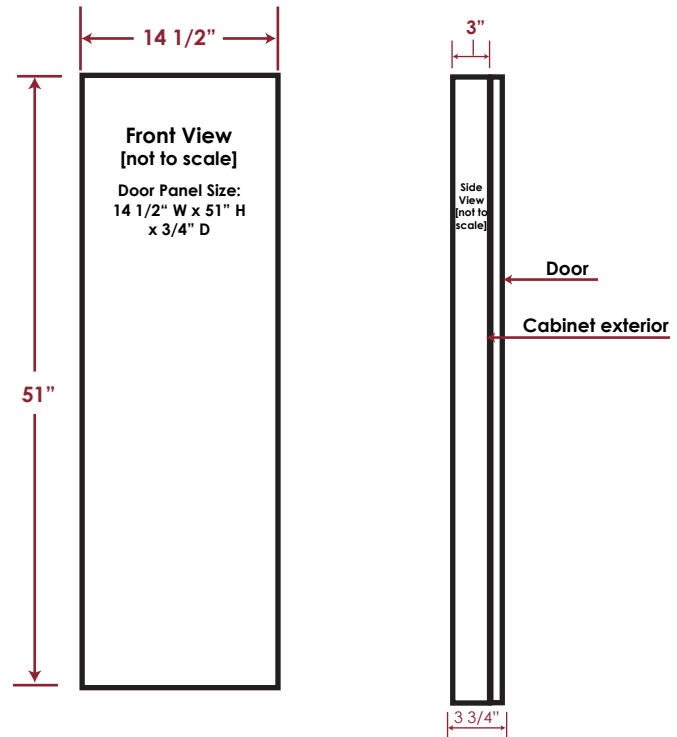
[When recessing, please ensure there is 40 1/4"]

- Do you have 16" on the hinge side in order for the door to fully open?**

The door is designed to open flush against the wall to allow proper ironing standing area next to the board, requiring 16" on the door side.

- Do you have at least 24" on ironing side for standing room?**

Be sure to check that you have adequate standing space (at least 24") to stand beside the unit to iron.



Product Dimensions

Overall Size:

Height 51"
Width 14 1/2"
Depth* 3 3/4"

Rough-In Opening:

Height 51"
Width 14 1/2"
Depth* 3 7/8"

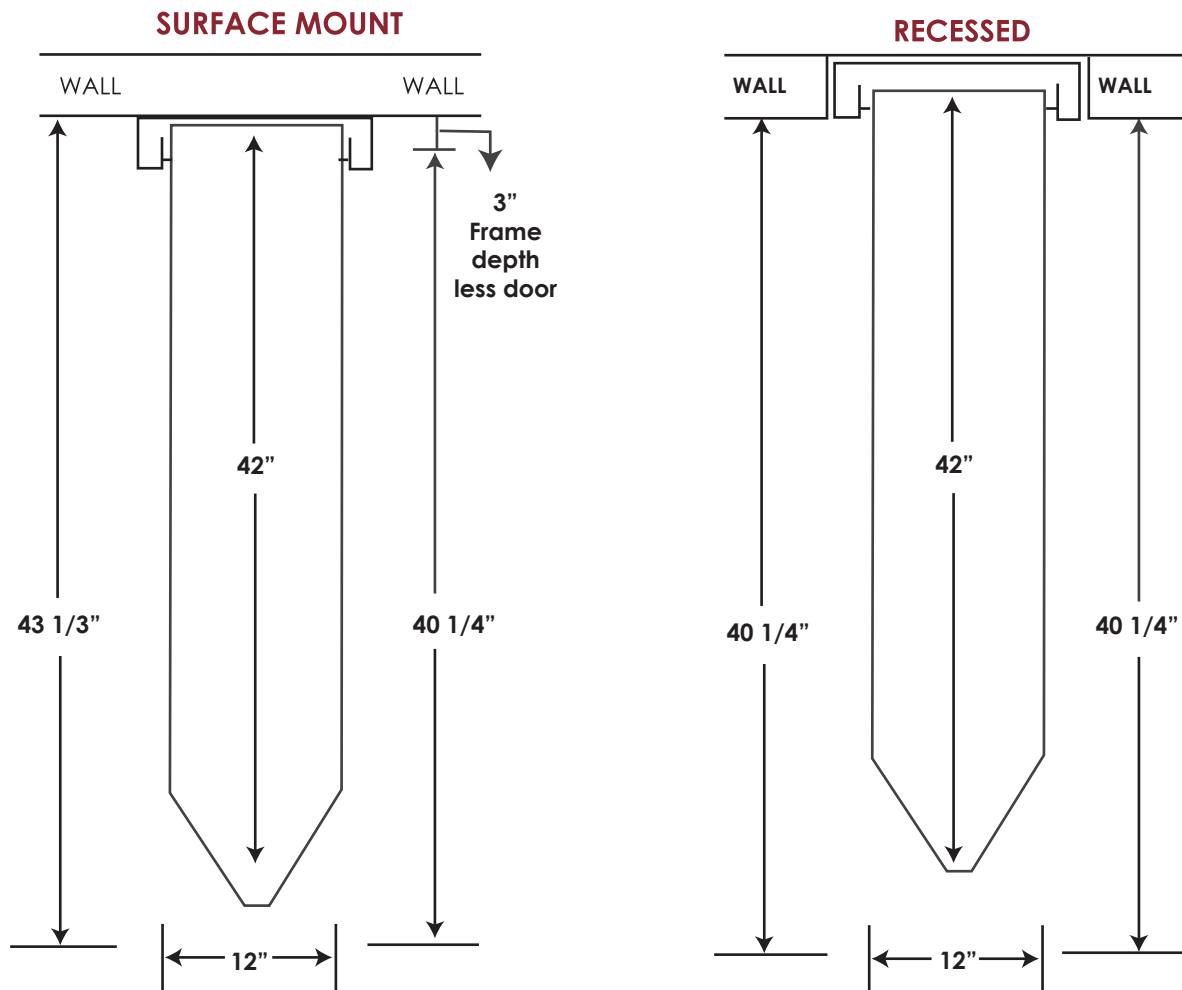
Unit Depth Extending Into Room*:

Recessed Flush
Surface Mount 3 3/4"

Installation Heights

Mounting Height Above Floor	Desired Ironing Height
28"	35"
27"	34"
26"	33"
25"	32"
24"	31"
23"	30"
22"	29"

*Depth includes door



Items to Note:

Installation Height:

Use the provided Installation Height Chart on the previous page to determine your desired ironing board height.

Door:

Ironing center comes standard with a flat maple veneer door and a variety of additional door options. Door opens approximately 180°, flush against the wall. Please be sure to allow 16" to the side of unit for the door to open fully open.

Installation types:

Recessed: Placed into the wall, between 16" on center studs, protruding 3 7/8" into the room. It is recommended to attach a 2" x 4" cleat to studs, level with bottom of the opening to support cabinet when installing.

To achieve a flush mount, please be sure to order with Blum Hinges.

Surface Mount: Installed directly onto the wall, with no cutout, centered and anchored on secure stud. Will protrude 3 3/4" into room. When surface mounting Electrical Models, use the knockout on the back of the electrical raceway rather than the top, to run the conduit into the unit. This will also require drilling a hole through the backboard for access.

Hinge Side:

Unit comes standard with the hinge on the right. A left side hinge can be requested when placing order.