



Iron-A-Way®

How to Install an

Electrical Raceway

Tools Needed

- Phillips Screwdriver
- Flathead Screwdriver or 1/4" Nut Driver
- Needle Nose Pliers
- Level



Questions?
Give us a call at 1-800-536-9495
or email support@ironaway.com

1



Turn off power at electrical entrance

Please disconnect all power to the unit at service entrance BEFORE attempting to service or rewire the unit.

2



Separate raceway

Open the electrical raceway and separate the cover and back from each other.

3a



Place raceway in cabinet

Place the back of raceway inside cabinet, 1/4" from left side and 1" from the top left corner of the cabinet. Align the middle set of screw holes with the wooden cross support cleat in cabinet.

3b



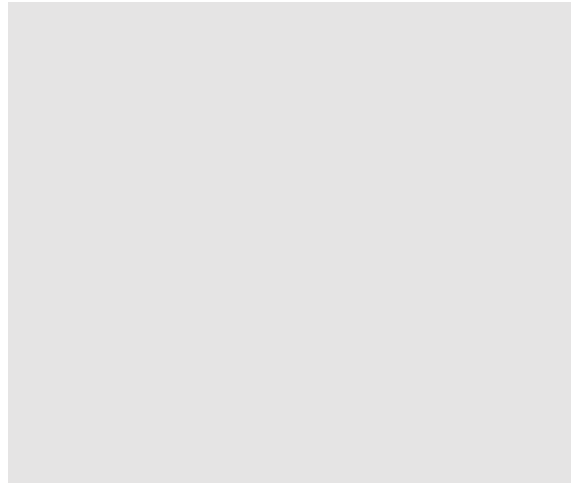
Install raceway in cabinet

Install raceway back by anchoring screws into the middle section first. Using small level, make sure raceway is plumb, then anchor just one screw into left bottom set of screw holes.



4 Connect green ground wire

With raceway cover in hand, locate green ground wire. Attach the wire to the remaining screw hole on back of raceway with provided screw and star washer.



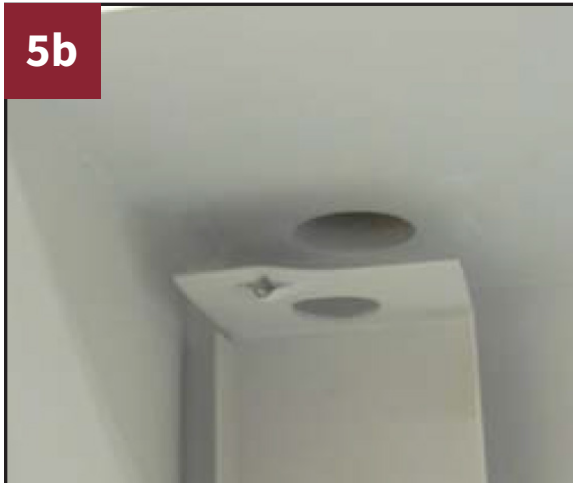
Make certain that the star washer is pinched between the electrical raceway and the terminal on the grounding wire. Star washer should break the paint surface when tightened.



5a Located provided pigtails

Pigtails are provided for connecting power and are located in the lower part of the electrical raceway for hookup to supply line.

PLEASE BE SURE YOUR POWER IS SHUT OFF AT SERVICE ENTRANCE BEFORE PROCEEDING.



5b Connect pigtail wires

The supply line enters through the vent hole in the top left side of the cabinet, then through the electrical knockout provided in top of electrical raceway.

Connect white to white, black to black.



6 Install front of raceway

After connecting unit to main power, install the raceway cover. Place cover over back part that is already installed. Hold in place and secure bottom by installing screw by electrical outlet. Then install screw at top of raceway.

You can now restore power.

Installation Complete!

Questions?
Give us a call at 1-800-536-9495
or email support@ironaway.com

