



## NE-42

### Clearance Check List

Important questions to consider prior to the purchase of an NE-42

- Do you have 42" in front of the unit for the board to drop down completely?**

Ensure that you have a full 42" in front of the desired installation location for the board to drop down fully for a level ironing surface.

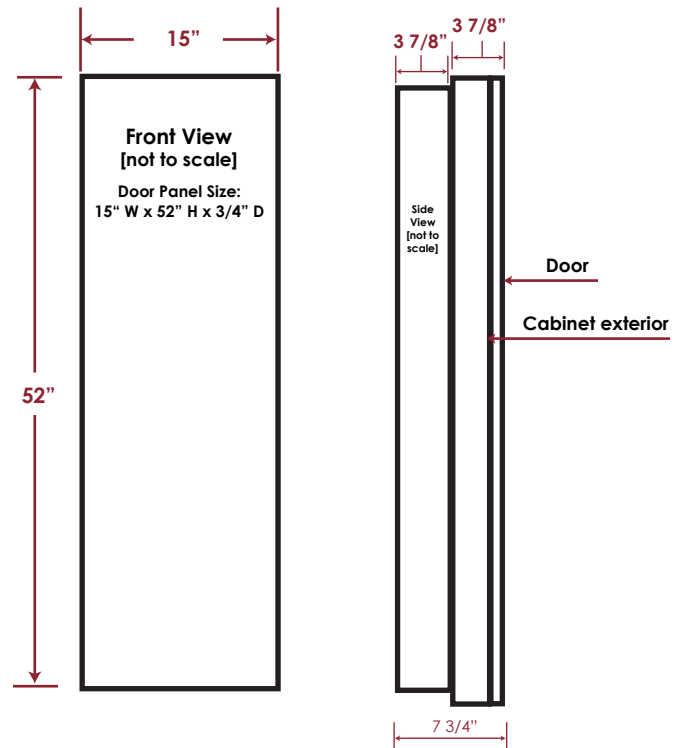
[When surface mounting, please ensure there is 45 7/8"]

- Do you have 16" on the hinge side in order for the door to fully open?**

The door is designed to open flush against the wall to allow proper ironing standing area next to the board, requiring 16" on the hinge side.

- Do you have at least 24" on ironing side for standing room?**

Be sure to check that you have adequate standing space (at least 24") to stand beside the unit to iron.



### Product Dimensions

**Overall Size:**

Height 52"  
Width 15"  
Depth\* 7 3/4"

**Rough-In Opening:**

Height 51 1/4"  
Width 14 3/8"  
Depth 3 7/8"

**Unit Depth Extending Into Room\*:**

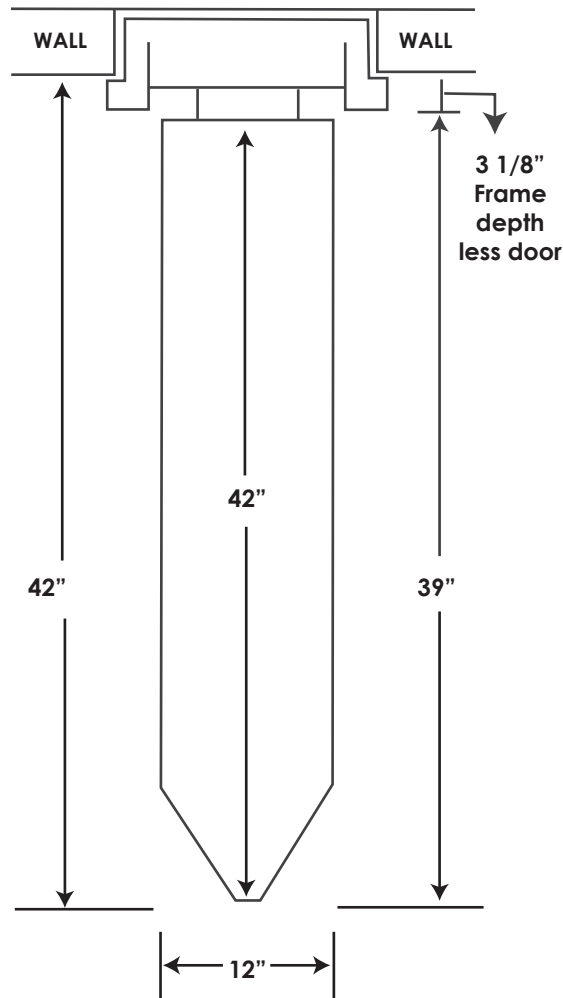
Recessed 3 7/8"  
Surface Mount 7 3/4"

**Unit Overlap Distance when Recessing: 3/8"**

### Installation Heights

Mounting Height Above Floor	Desired Ironing Height
30"	37"
29"	36"
28"	35"
27"	34"
26"	33"
25"	32"
24"	31"

\*Depth includes door



## Items to Note:

### Installation Height:

Use the provided Installation Height Chart on the previous page to determine your desired ironing board height.

### Installation types:

- **Recessed:** Placed into the wall, between 16" on center studs, protruding 3 7/8" into the room. It is recommended to attach a 2" x 4" cleat to studs, level with bottom of the opening to support cabinet when installing.

- **Surface Mount:** Installed directly onto the wall, with no cutout, centered and anchored on secure stud. Will protrude 7 3/4" into room. Optional surface mount kit is available to finish sides of unit and recommended for complete installation.

### Door:

Ironing center comes standard with a flat maple veneer door and a variety of additional door options. Door opens approximately 180°, flush against the wall. Please be sure to allow 16" to the side of unit for the door to open fully open.

### Hinge Side:

Unit comes standard with the hinge on the right. A left side hinge can be requested when placing order.