



## IAW-42

### Clearance Check List

Important questions to consider prior to the purchase of an IAW-42

- Do you have 43 1/3" in front of the unit for the board to drop down completely?**

Ensure that you have a full 43 1/3" in front of the desired installation location for the board to drop down fully when surface mounting.

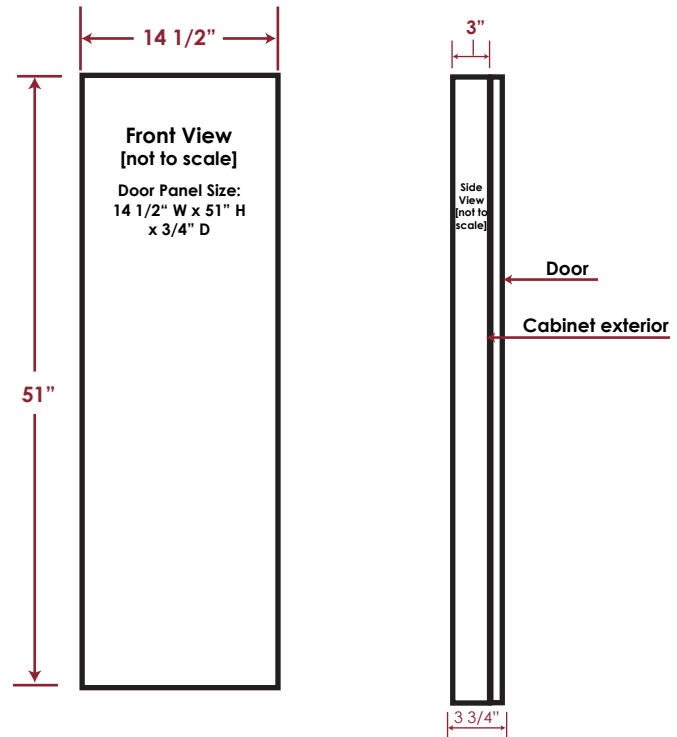
[When recessing, please ensure there is 40 1/4"]

- Do you have 16" on the hinge side in order for the door to fully open?**

The door is designed to open flush against the wall to allow proper ironing standing area next to the board, requiring 16" on the door side.

- Do you have at least 24" on ironing side for standing room?**

Be sure to check that you have adequate standing space (at least 24") to stand beside the unit to iron.



### Product Dimensions

**Overall Size:**

Height 51"  
Width 14 1/2"  
Depth\* 3 3/4"

**Rough-In Opening:**

Height 51"  
Width 14 1/2"  
Depth\* 3 7/8"

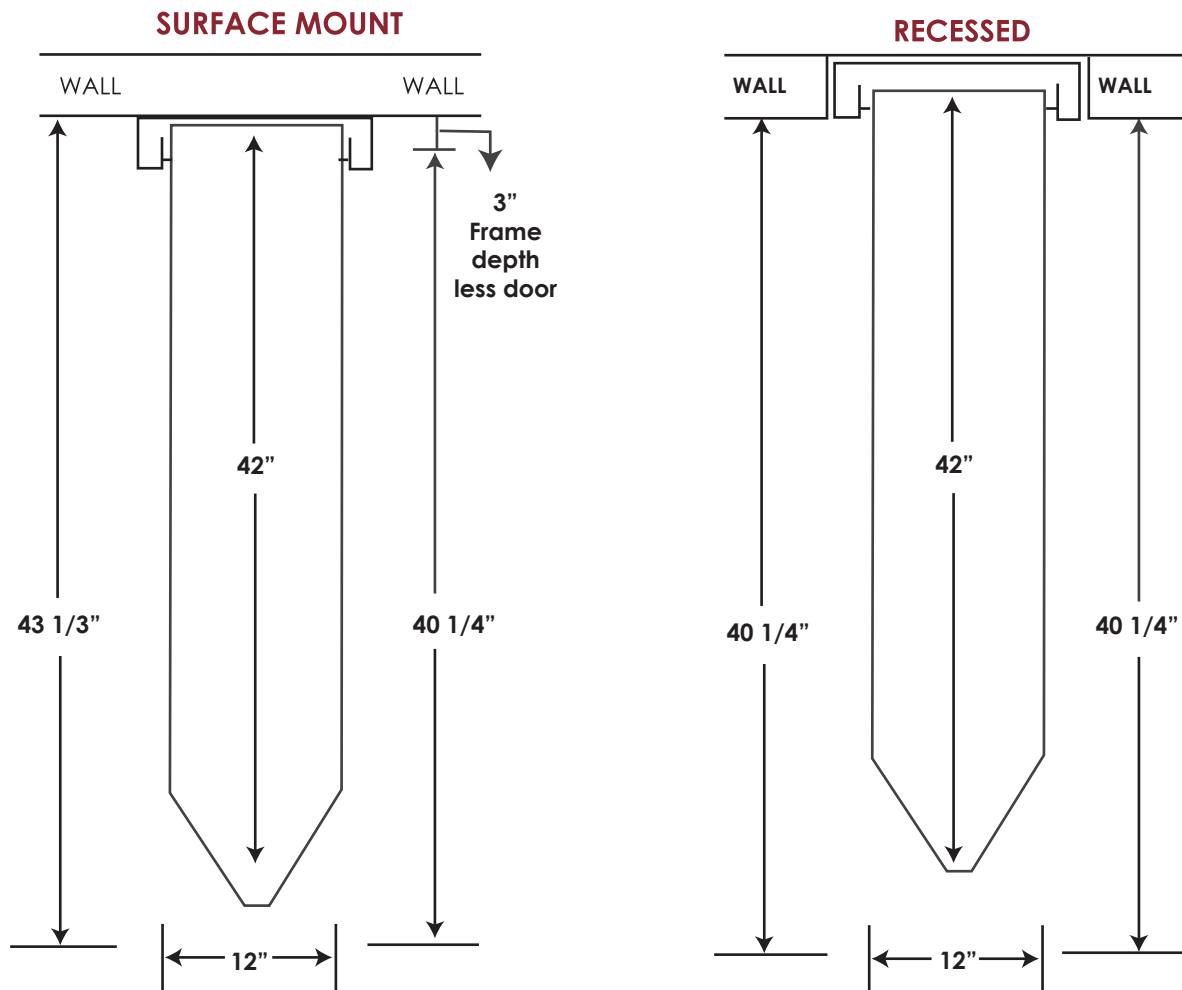
**Unit Depth Extending Into Room\*:**

Recessed Flush  
Surface Mount 3 3/4"

### Installation Heights

| Mounting Height Above Floor | Desired Ironing Height |
|-----------------------------|------------------------|
| 28"                         | 35"                    |
| 27"                         | 34"                    |
| 26"                         | 33"                    |
| 25"                         | 32"                    |
| 24"                         | 31"                    |
| 23"                         | 30"                    |
| 22"                         | 29"                    |

\*Depth includes door



## Items to Note:

### Installation Height:

Use the provided Installation Height Chart on the previous page to determine your desired ironing board height.

### Door:

Ironing center comes standard with a flat maple veneer door and a variety of additional door options. Door opens approximately 180°, flush against the wall. Please be sure to allow 16" to the side of unit for the door to open fully open.

### Installation types:

- **Recessed:** Placed into the wall, between 16" on center studs, protruding 3 7/8" into the room. It is recommended to attach a 2" x 4" cleat to studs, level with bottom of the opening to support cabinet when installing.

To achieve a flush mount, please be sure to order with Blum Hinges.

- **Surface Mount:** Installed directly onto the wall, with no cutout, centered and anchored on secure stud. Will protrude 3 3/4" into room.

### Hinge Side:

Unit comes standard with the hinge on the right. A left side hinge can be requested when placing order.