

# Part Manuals

000231 Cherry Snap Switch - White

## How to Replace a Safety Disconnect Switch

### Tools Needed



Flathead  
Screwdriver or  
1/4" Nut Driver



Phillips  
Screwdriver

### Step One Turn off power at electrical entrance



**Please disconnect all power to the unit at service entrance  
BEFORE attempting to service or rewire the unit!**

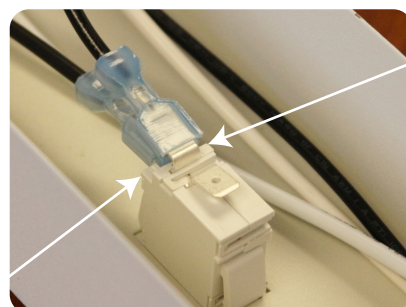
### Step Two Unscrew electrical raceway

Begin removing electrical raceway from unit by removing small screws at the top and bottom of raceway with a flathead screwdriver. Gently pull raceway out the of unit, being careful of wires that are still connected.



### Step Three Remove switch connectors

Next, turn raceway and locate back of switch. There are two connectors coming from the unit. Remove the top connector and then the bottom. Note: This requires some gentle pulling force.

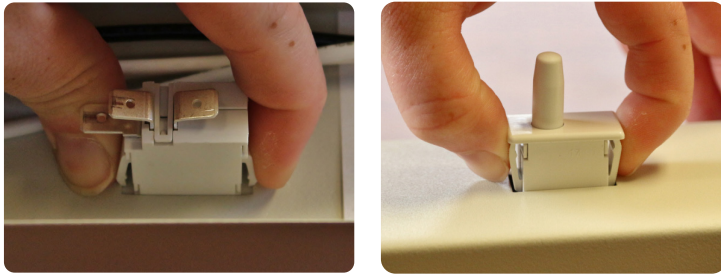


Top connector

Bottom connector

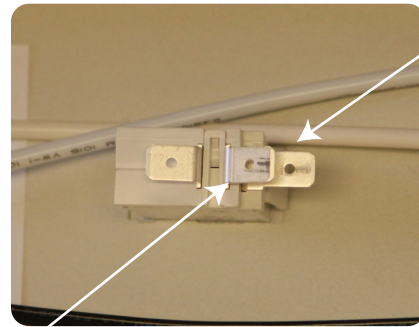
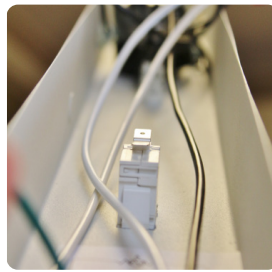
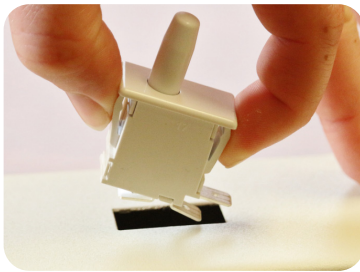
## Step Four Remove old switch

Now gently squeeze springs on sides of switch to depress. Push switch forward towards front of raceway. Pull switch out of raceway from the front.



## Step Five Install new switch

Place new switch with the double terminal prongs facing the top of the raceway. Snap new switch into place. Reconnect electrical connectors by first connecting the short wire coming from the timer to the bottom prong. Then connect the longer wire coming from the unit to the top prong.



Bottom Prong  
(Connect wire from timer)

Top Prong  
(Connect wire from unit)

## Step Six Re-install electrical raceway.

Return raceway to unit, screwing top and bottom screws to hold in place.



## Step Seven Restore power to unit



Once raceway is re-installed, restore power to the unit!

*Installation Complete!*

